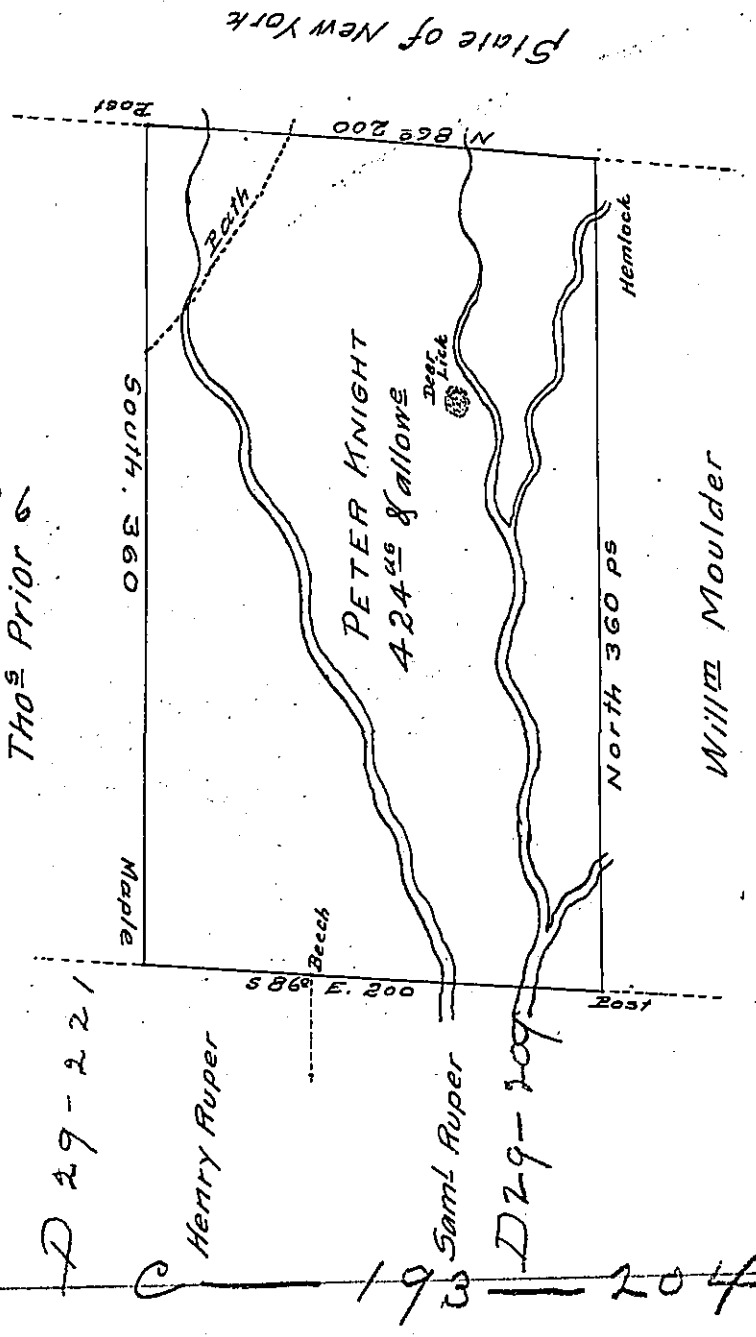


A. 73. 16
Thos Prior

D. 30-293



A Draught of a tract of land called _____ situate joining the York line
 land of William Moulder & others in Northum^d County containing Four
 hundred & twenty four acres & allowance of six p Cent for roads &c.
 Surveyed for Peter Knight the 3^d day of Sept^r 1784 in pursuance of a
 Warrant dated the 2^d day of July 1784
 by W^m Gray D.S.

To John Lukens ^{Esg^r} _{Surv^r G.}

IN TESTIMONY that the above is a copy of the original remaining on file in
 the Department of Internal Affairs of Pennsylvania, made
 conformably to an Act of Assembly approved the 16th day of
 February, 1833, I have hereunto set my Hand and caused
 the Seal of said Department to be affixed at Harrisburg,
 this eleventh day of March 1908

Henry Howell
 Secretary of Internal Affairs.